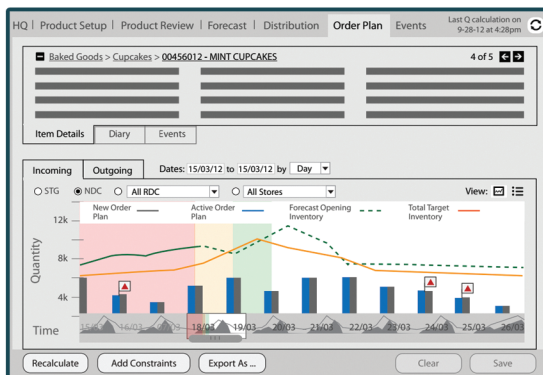


Order Planning

Designed to address the unique challenges emerging in today's rapidly evolving retail environments, Quantum Retail introduces **Q for Order Planning**, a dynamic sales forecasting and order planning solution that continuously learns. Q offers retail buyers a way to predict item behavior by taking into account a range of variables, including traditional measurements such as seasonality and lifecycles, and on to more sophisticated analytical data. Q delivers an understanding of the behavior of today's empowered consumers.

The Q solution provides a granular view of market needs, continuously learns, and then reacts to present buying trends and behaviors. As channels continue to evolve and as consumers become more complex, the most adept retail planners and strategists are leveraging Q solutions to help them meet their unique business objectives.



Q for Order Planning allows retailers to know what products to purchase and in what quantity based on merchandise behavior and the individual retailer's strategic goals. Q's dynamic approach to planning integrates merchandising fulfillment processes while managing and reporting on inventory at the store level.

Q for Order Planning Offers An Array Of Benefits:

New Item Order Planning: The Q Demand Engine calculates order plans for products with no sales or inventory history.

Time Phased Inventory Targets: Q offers a view of future inventory target fluctuations based on range, seasonality, lifecycle min/max or constraints.

Sales Forecasting: Q predicts demand forecasts constrained by inventory into the future.

Flow & Constraint Modifications: Manages inventory flows through warehouses/vendors with constraints (product, location or vendor).

Real-Time Updates: Allows real-time updates to the order plan based on user modifications to the forecast or order plan.

Clear Understanding Of Your Supply Network: Allows for the goals of each tier to be considered and the timing between them to be easily managed.

Order Planning

Q for Order Planning features a user-friendly interface that makes proactive event planning simple with interactions for users to deliver inventory just-in-time, build stock or taper off inventory post-event. In addition, users are able to track stock, service levels, profitability and over 30 other dimensions of product behavior. Users can scroll back in time or predict future performance.

Q improves sales forecasting and order planning to ensure smoother deliveries while accounting for product, location, or vendor capacity constraints in supply chain logistics. **Q** allows for different lead times from multiple sources to a retailer's warehouses or store locations.

The System Auto-Approves Order Plans and highlights exceptions that are easily viewed through alerts. **Q** automatically makes decisions based on strategies and rules and can alert for exceptions or manually override decisions by SKU, category, or cluster.

Offering Users Real-Time What-If Functionality in which users can make changes at different levels via multiple sources, tiers and timeframes while planning inventory. **Q** re-optimizes the supply chain in real time, incorporating any changes and constraints with the ability to shift back and forth with the click of a button.

Q enables multi tier planning with continuous visibility of the movement of inventory in and out of the retailer's supply network.

Giving Retailers the Intelligence to Make More Informed Decisions

Q for Order Planning offers retailers greater visibility into the areas that can proactively impact results and help them experience better inventory flow. Retailers are presented with the best information about product and place to make the right decisions.

How Can We Help You?

Translating data into meaningful merchandising plans takes a new level of insight that can only be delivered by Quantum Retail. Quantum drives millions of decisions for our clients every day. Call today to discuss your unique goals and challenges. Learn how **Q** can help you maximize the potential of your supply network and your inventory investment.

Q Order Planning System Requirements:

| <u>Operating System</u> | <u>Database</u> | <u>Web Browser</u> | <u>Client Component</u> |
|-------------------------|-----------------|--------------------|-------------------------|
| RedHat Linux 5.X+ | Oracle 11gR2 | Firefox | JAVA JRE 1.6 |